

MORE SUSTAINABLE INNOVATION



THE MOST EFFICIENT SAVINGS

USES 100% OF THE WATER PRODUCED

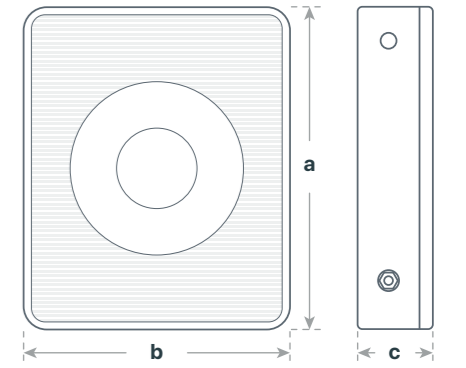


Technical data

- Model: Alka Pro
- Pure water flow: 2,5 L/min (at 3 Bar pressure)
- Adequate water resource to use: drinking water
- System dimensions:
a. 375 mm | b. 310 mm | c. 90 mm
- System weight: 2 kg



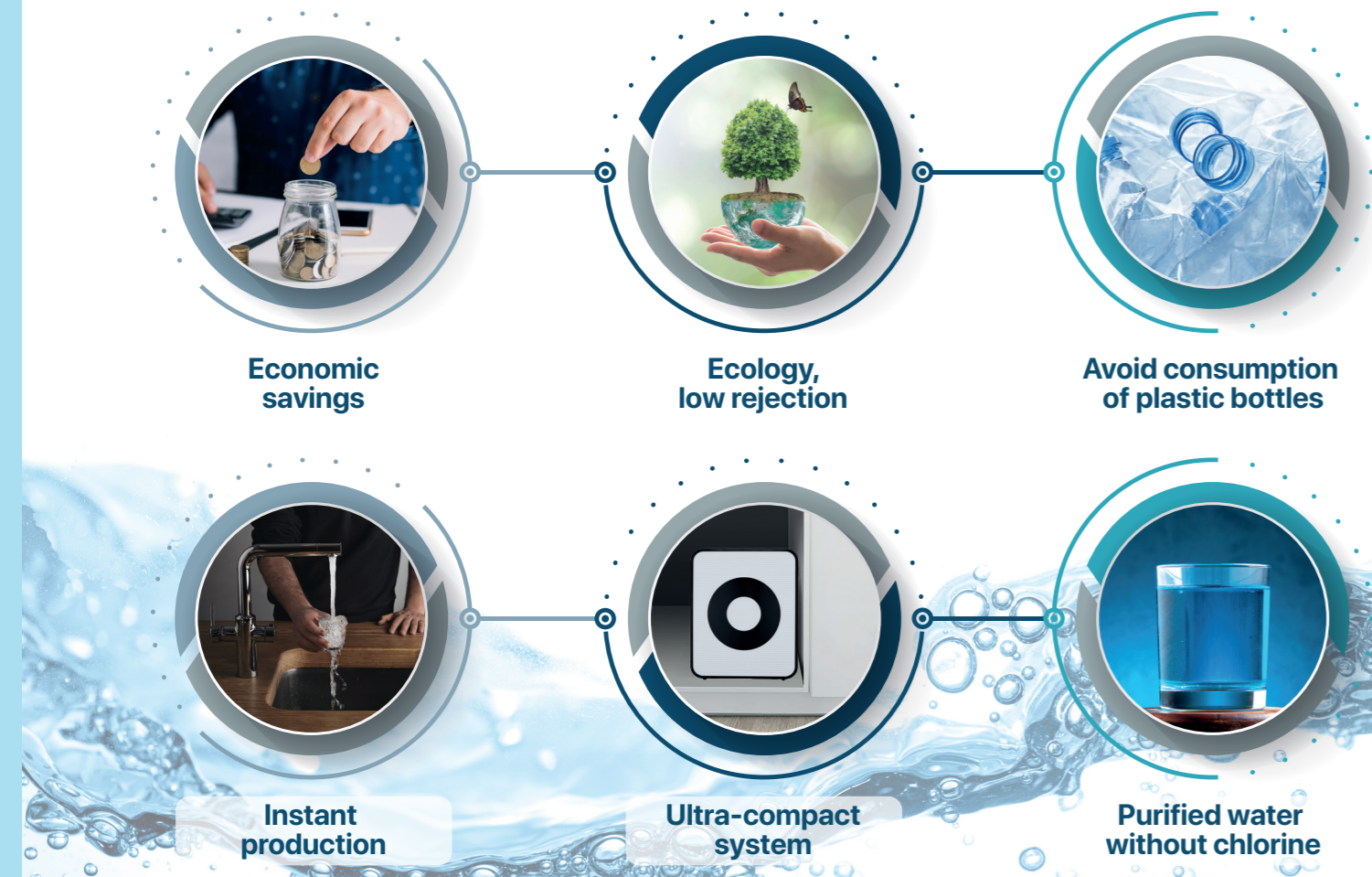
alka-pro
drinking pure water



TECHNOLOGY FOR SUSTAINABILITY

THE MOST SUSTAINABLE WAY TO TAKE CARE OF YOURSELF

DO YOU KNOW THE ADVANTAGES OF DIRECT FLOW SYSTEMS?





EVOTECH
WATER

**ENVIRONMENTALLY
SUSTAINABLE, WITH
NO WASTE OF WATER**

ECOLOGIC
SYSTEM

WATER
ALWAYS
AVAILABLE



EVOTECH
WATER



alka-pro

**DRINK
PURIFIED WATER**



EVOTECH
WATER